

# guidelines

## Use in Accordance with Regulations

The WEIGHTANKA system is a mobile deadweight, non-penetrating anchor system. It is an integral part of a personal protection system for the prevention of falls from heights and may be used only in conjunction with the relevant personal protective equipment and operated by a competent person as per OSHA code 29 CFR 1926.32(f). The WEIGHTANKA system is deemed to be used in accordance with regulations ONLY when all of the following conditions are met:

- Fall Arrest application, only one person may be connected to the system at any time.
- Fall Restraint application, a maximum of two users may be connected simultaneously to the system where no user is able to reach a position of 20 inches from the roof edge, roof opening or other fall hazard.
- The WEIGHTANKA system may only be used when the supporting base is free from snow and ice. Do not use if there is a risk of frost or freezing conditions.
- DO NOT position the system where there is a risk of accumulation of water or contamination on the roof surface by oil, grease or growth of algae.
- A clearance height of at least 1ft must remain above the highest component of the system.
- No part of the system is to be placed closer than 10ft from the edge of the roof or roof opening.
- Ensure all skylights in the work area are protected to prevent possible falls.
- ALL component pieces must be used for the assembly of the system.
- Use of the system in high winds is NOT permitted.
- DO NOT use if the system has been used in the event of a fall arrest.
- DO NOT use until operator has been given instruction by a fully trained, competent person.
- A thorough examination is to be carried out on the system annually and recorded on the inspection card.

### PLEASE BE AWARE:

If the WEIGHTANKA system is used incorrectly, a fatal fall or severe injuries may occur.

For more information on the Kee Anchor product family visit  
<http://keesafety.com/us/products/KeeAnchor>

# fall protection

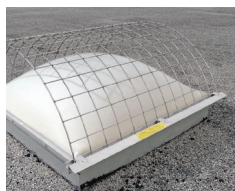


modular, free-standing roof-edge railing system that does not penetrate the roof membrane



portable, temporary, free-standing railing system that is fully OSHA compliant

CONTRACTOR



screens for curb style, standing seam, and rib/corrugated metal roof skylights

SKYLIGHT SCREENS



skylight guardrail system, fits skylights, roof lights, and dome lights with curbs



safety barrier system for safe passage through hatches in roofs or floors



USA  
Kee Safety, Inc.  
100 Stradman Street  
Buffalo, NY 14206  
Tel: (716) 896 4949  
Fax: (716) 896 5696  
Toll Free: (800) 851 5181  
[www.keesafety.com](http://www.keesafety.com)  
Email: [info@keesafety.com](mailto:info@keesafety.com)

Canada  
Kee Safety, Ltd.  
219 Connie Crescent, Unit 9  
Concord, Ontario L4K 1L4  
Tel: (905) 669 1494  
Fax: (905) 669 4347  
Toll Free: (877) 505 5003

Kee Klamp, Kee Lite, Kee Stainless, Kee Guard, Kee Dome, Kee Hatch, Kee Mark, Kee Access, KwikKit, Kee Anchor, Weightanka, Wireanka, Beam Clamp, and Box Bolt are all registered trademarks of Kee Safety, Inc. While every effort has been made to ensure the accuracy of the information contained in this brochure, Kee Safety, Inc. cannot be held responsible for any errors or omissions. Kee Safety, Inc. reserves the right to alter or withdraw products without prior notice. Kee Safety, Inc. accepts no responsibility for any loss or damage arising from improper use of their products.  
Copyright 2009 Kee Safety, Inc. All Rights Reserved.



SAFETY AT THE HIGHEST LEVEL

## WEIGHTANKA Installation Instructions



- NO PENETRATION OF THE ROOF MEMBRANE
- INDEPENDENTLY TESTED, MEETS OR EXCEEDS SAFETY STANDARDS
- SIMPLE TO INSTALL
- EASY STORAGE OPTIONS

CSI 077200



Independently tested to  
OSHA Standard 29 CFR 1910.23  
Ontario OHS Act  
Meets ANSI Standards

# installation

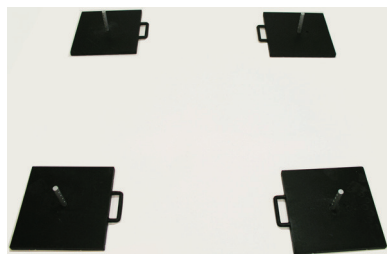
## Weightanka

A KEE SAFETY PRODUCT

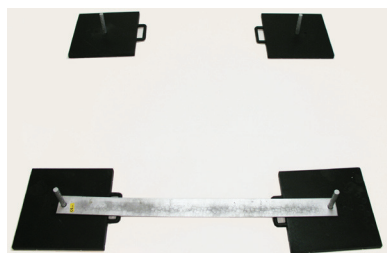
**PLEASE BE ADVISED:** Before using the WEIGHTANKA system for the first time, it is strongly recommended that installers assemble and disassemble the system to familiarize with the product, instructions and pieces in a safe area that is not the installation site. All the pieces are to be used in the assembly. Should a piece be missing, do not continue to assemble system and please contact Kee Safety immediately.



**Step 1:**  
Lay rubber base weights suction cups down approx. 3ft apart.



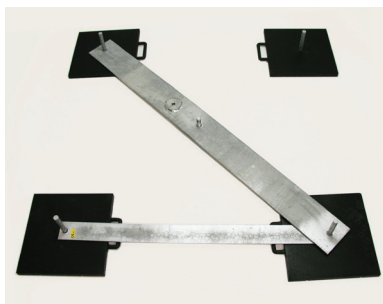
**Step 2:**  
Screw the location pins into the rubber base weights.



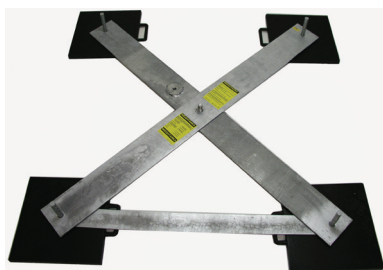
**Step 3:**  
Slide stabilizer arm over location pins, moving base weights accordingly.



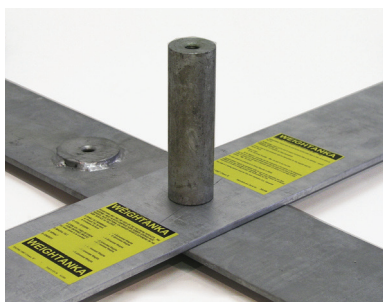
**Step 4:**  
Screw the M20x75 bolt into the centrally located countersunk boss.



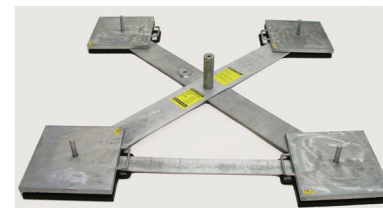
**Step 5:**  
Slide bottom cross arm over location pins diagonally with the M20x75 bolt upwards.



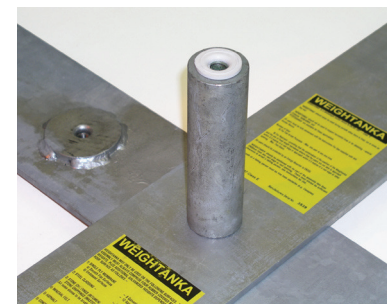
**Step 6:**  
Position the top cross arm over location pins diagonally.



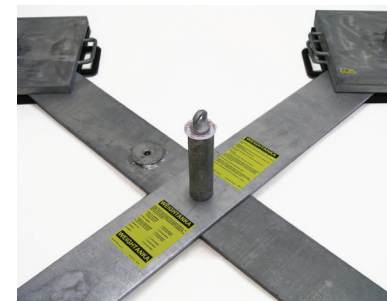
**Step 7:**  
Screw pedestal onto M20x75 bolt while holding the screw head in place until tight.



**Step 8:**  
Place galvanized weights onto location pins. Stack number of weights accordingly to application, ensuring the number of weights on diagonals are equal.



**Step 9:**  
Place polyethylene washer on top of pedestal.



**Step 10:**  
Place PPE warning disk on top of previous placed washer and then screw in eyebolt.



**Step 11:**  
Using the tightening bar, secure the eyebolt firmly in place.